



MEDICINE
UNDERGRADUATE
PROSPECTUS
2026



For Medicine,
2025 Guardian
University Rankings.

A DIFFERENT KIND OF MEDICAL SCHOOL



DISCOVER
MEDICINE



WELCOME TO HULL YORK MEDICAL SCHOOL: THE JOINT MEDICAL SCHOOL OF THE UNIVERSITIES OF HULL AND YORK

We are committed to transforming the health of people in our region and beyond – through our teaching, our research, our partnerships and our community engagement.

Here at Hull York, we are extremely proud of our Medicine and Medicine with a Gateway Year programmes, which allow us to train confident, compassionate and work-

ready doctors – the kind of doctors who can recognise and respond to the needs of their patients, and deliver exceptional care throughout their careers.

I look forward to welcoming you to our School!

**PROFESSOR MATTHEW
MORGAN DEAN, HULL
YORK MEDICAL SCHOOL,
AND CONSULTANT
NEPHROLOGIST**

**WE ARE COMMITTED TO TRANSFORMING THE
HEALTH OF PEOPLE IN OUR REGION AND BEYOND.**

CONTENTS

INTRODUCING HULL YORK MEDICAL SCHOOL

- 2 Welcome
- 4 A different kind of medical school

STUDYING WITH US

- 5 Your Medicine journey
- 6 Where will you study?
- 8 How will you learn?
- 10 Your first year
- 12 Tailor your programme
- 14 Your home from home

ADMISSIONS AND OFFERS

- 16 Entry requirements
- 18 Our selection procedure
- 20 Our offers
- 22 Applying to medical school
- 26 Fees and funding
- 30 After you graduate



A DIFFERENT KIND OF MEDICAL SCHOOL

Welcome to Hull York Medical School, home of exceptional medical education and a modern, innovative undergraduate medicine programme.

At Hull York Medical School, we offer two routes to becoming a doctor: our five-year Medicine degree; and our six-year Medicine with a Gateway Year degree. At the end of your studies on either the five- or six-year programme, you will be ready to enter the workforce as a junior doctor with an MB BS (Bachelor of Medicine and Bachelor of Surgery) degree, awarded jointly by the Universities of Hull and York.



For Medicine,
2025 Guardian
University Rankings.

WHAT MAKES US DIFFERENT

2 UNIVERSITIES,
TWICE THE
EXPERTISE

**CLINICAL
PLACEMENTS**
BEGIN IN WEEK



LEARN TO
DELIVER CARE
WITH CONFIDENCE
AND EMPATHY



**PROBLEM BASED
LEARNING**
FACILITATED
BY CLINICIANS



WE'VE
ADDED
OVER **2000**
DOCTORS TO THE
NHS WORKFORCE



YOUR MEDICINE JOURNEY

GATEWAY YEAR

Our six-year Medicine with a Gateway Year programme is a Widening Participation initiative, designed to increase access to medicine for those from underrepresented backgrounds. On this programme, your first year of study will support your transition from school or college to university, providing an excellent foundation in human biology and communication skills. On successful completion of the gateway year, you progress to Phase I.

PHASE I (YEARS 1 AND 2)

Phase I, the first two years of the five-year Medicine programme, is centred around problem-based learning (PBL), reinforced by weekly clinical placements in GP surgeries and hospitals, as well as communication, clinical skills and anatomy sessions, lectures, and workshops.

PHASE II (YEARS 3 AND 4)

In Phase II, which is years three and four of the five-year Medicine programme, you will be fully immersed in a range of clinical placements across GP surgeries, community settings and hospitals. You will develop your clinical, history-taking, examination and problem-solving skills with patients, under the supervision of dedicated clinical tutors.

PHASE III (YEAR 5)

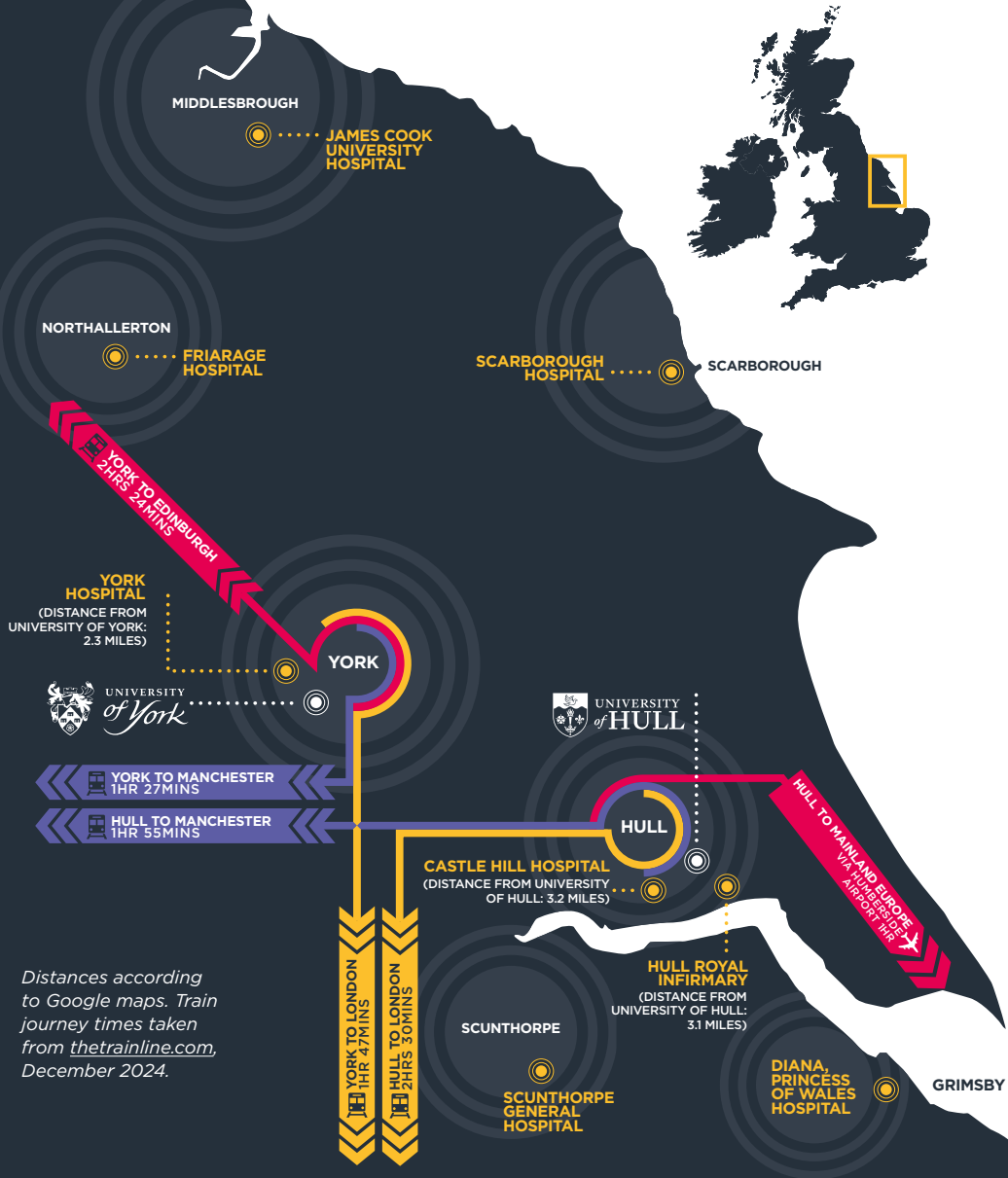
In Phase III, which is the final year of the programme, your clinical placements will continue in primary and secondary care settings, where even more emphasis will be placed on you being a member of a multidisciplinary medical team, gaining experience of on-call and out-of-hours duties. During the final year, you will also complete your elective and undertake an assistantship, which will help you prepare for your role as a junior doctor.

**LEARN MORE
ABOUT OUR
PROGRAMME**



CLICK HERE

STUDYING WITH US



Distances according to Google maps. Train journey times taken from thetrainline.com, December 2024.

Please note that you will not be required to commute regularly between our main locations. Currently, students in Years 1-2 of the Medicine programme attend placements in or around their home campus city. For the remainder of the Medicine programme, you will be allocated to either a Hull or York base in each year, and will rotate around our clinical sites in that region.

WHERE WILL YOU STUDY?

Our partnerships with NHS Trusts, community organisations and GP practices across the region enable us to provide placements in a wide range of locations; from busy urban GP practices and major trauma centres serving densely populated areas, to mental healthcare providers, and rural and coastal community services.

MEDICINE WITH A GATEWAY YEAR

Placements in the Gateway year take place throughout the three terms, and allow you to spend time with people who work in healthcare.

MEDICINE PHASE I

Starting in the third week of the five-year Medicine programme, you will attend clinical placements every week. Your placements will help you put into context what you have learned in your PBL and anatomy sessions, lectures, and clinical and communication skills classes. In your first two years you will attend placements in or around Hull or York.

MEDICINE PHASE II

From your third year onwards, you will experience placements across our region. We provide placements at both hospital and community-based locations, including:

- Community placements at over 100 GP practices and providers of mental health, dermatology, sexual health, women's health or paediatrics services

And hospital placements at:

- Hull Royal Infirmary (Hull)
- Castle Hill Hospital (Hull)
- York Hospital (York)
- Diana, Princess of Wales Hospital (Grimsby)
- Scunthorpe General Hospital (Scunthorpe)
- Scarborough Hospital (Scarborough)
- The Friarage Hospital (Northallerton)
- James Cook University Hospital (Middlesbrough)

We regularly review our placement offering to ensure you get the very best clinical experience across our region, and so it is possible that changes to the way we deliver placements may become necessary in future years. Should this occur, we will ensure you are kept fully informed.

HOW WILL YOU LEARN?

We believe that strong communication and problem-solving skills are essential to delivering successful patient-centred care. That's why we place problem-based learning and communication at the heart of our curriculum. Clinical reasoning, critical thinking and ongoing self-directed learning skills are crucial to your success as a doctor.

PROBLEM-BASED LEARNING (PBL)

Your PBL group will consist of approximately 10-12 students and one tutor, working together for the full academic year. Each week, your group will be set one or two scenarios, and through group discussion you will explore the medical, social, psychological and ethical issues surrounding a case, which can be more difficult to uncover through lectures alone.

Each PBL group is facilitated by a tutor who is an experienced clinician, and who will guide your learning while also providing pastoral care and support.

All of our PBL tutors have a passion for education and a wealth of real-world experience to draw from. Your lectures, clinical placements, and anatomy and skills sessions will all relate to that week's PBL scenarios.

Through PBL you will form strong relationships, learn how to communicate effectively in a group, and work as part of a team to tackle and solve problems.

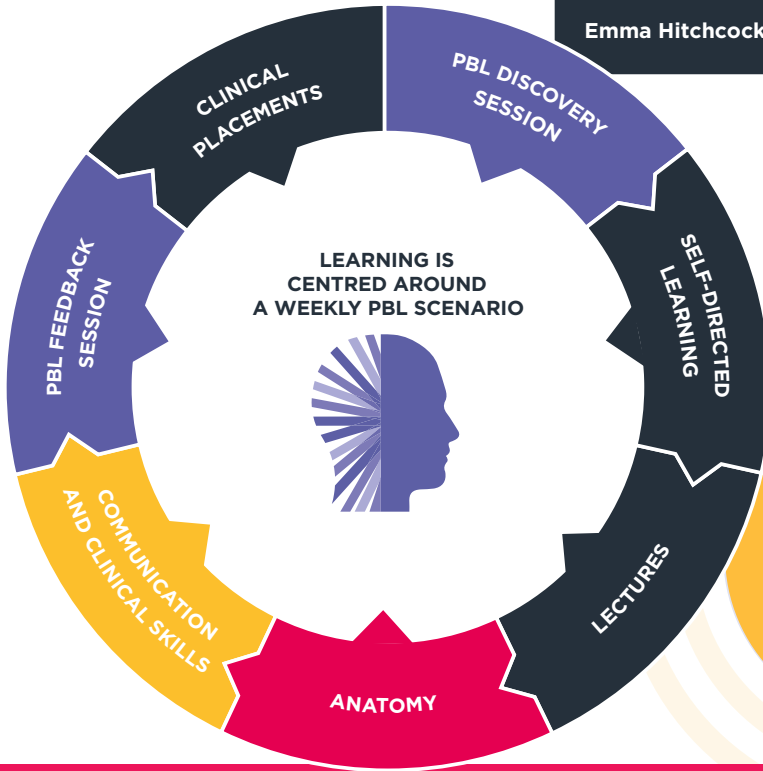
COMMUNICATION AND CLINICAL SKILLS

Our curriculum has been designed to ensure you develop a wide range of skills that you will use in patient consultations throughout your career, from communicating with patients, clinical reasoning and taking histories, to physical and mental state

examination. From the first few weeks at Hull York Medical School, you will begin to develop your professional communication skills and will have the opportunity to practise these when on clinical placement. Clinicians often comment on Hull York graduates' excellent communication skills, which equip them for work in the NHS.

COLLABORATION AND TEAMWORK ARE THE BEATING HEART OF MEDICINE, AND PBL ENSURES DEVELOPMENT OF THESE KEY SKILLS.

Emma Hitchcock, Year 4



DISCOVER OUR CURRICULUM



CLICK HERE

ANATOMY

Under the guidance of our expert anatomists, you will develop the in-depth understanding of clinical anatomy needed to deliver exceptional healthcare. Everything you learn in your anatomy sessions will be applicable to the care of patients. We teach anatomy using prosections, which are anatomical specimens that have been dissected by our expert

anatomists to display and demonstrate specific structures, relationships, systems and regions. We use a range of preservation techniques, including Formalin embalming, Thiel embalming and plastination, to ensure that you get the most out of learning anatomy from human specimens.

YOUR FIRST YEAR

It's the job of our Phase I team to ensure you have as fulfilling and stimulating an experience as possible during your early years at Hull York Medical School, and to help you navigate any problems or concerns as you settle into the programme.

On the Medicine with a Gateway Year programme, your teaching will be divided into six modules: Human Biology I and II; Clinical Skills; Health and Society; Professionalism and Ethics; and Medical Scholarship. You will learn through a combination of hands-on learning opportunities in our anatomy labs, lectures, small group sessions, and clinical placement experiences.

As a student on our five-year Medicine programme, your studies in the first two years will revolve around your weekly problem-based learning sessions. Each week, all the PBL groups in your year will be working on the same cases. With guidance from your tutor, you'll discuss patient case studies holistically. This will help you to draw together all that you have learned by applying your knowledge to real-life situations. (see p8 for details).

I APPRECIATE THAT WE FOCUS ON OUR COMMUNICATION SKILLS, AS I THINK IT WILL MAKE A NOTABLE DIFFERENCE TO THE CARE WE DELIVER WHEN WE ENTER THE WORKFORCE.

Clarissa Prempeh, Year 3



GATEWAY YEAR EXAMPLE TIMETABLE

	MONDAY	TUESDAY	WEDNESDAY	THURSDAY	FRIDAY
AM	Lecture: Human Biology	Clinical and Communication Skills	Clinical Placement	Lecture: Human Biology	Tutorial: Professionalism and Ethics
PM	Seminar: Study Skills	Clinical and Communication Skills		Seminar: Health and Society	Anatomy Practical Session

The above timetable is for illustrative purposes only, and may differ from your final timetable. Your timetable will change each term to reflect the focus of that term's teaching.

YEAR 1 EXAMPLE TIMETABLE

	MONDAY	TUESDAY	WEDNESDAY	THURSDAY	FRIDAY
AM	Clinician-led PBL and Clinical and Communication Skills	Self-Directed Learning	SSIP (see p12)	Clinician-led PBL and Clinical and Communication Skills	Lectures
PM	Self-Directed Learning	Clinical Placement		Anatomy	Lectures

The above timetable is for illustrative purposes only, and may differ from your final timetable. It does not include workshops or biopracticals, which are delivered in specific weeks.

TAILOR YOUR PROGRAMME

Being a successful doctor requires you to draw from a wide range of academic and life experiences, so we encourage you to pursue areas of specialised knowledge outside the core curriculum – tailoring the programme to suit your interests and career aspirations. Opportunities include:*


LEARN MORE ABOUT OUR PROGRAMME



CLICK HERE

SCHOLARSHIP AND SPECIAL INTEREST PROGRAMME (SSIP)

You will take part in an SSIP in years 1-4. This gives you the opportunity to concentrate on subjects that particularly interest you, and study them in depth.

[Visit our website to find out more about the SSIP](#) 



“My SSIP research project investigated health disparities experienced by transgender and gender-diverse people. A solid understanding of research and how it is conducted will benefit my clinical practice in whichever field I choose, as it helps me to effectively apply evidence-based medicine.”

Alvina Chan, Class of 2024

“Intercalating in Clinical Anatomy at Hull York Medical School prepared me in multiple ways to achieve my aim of becoming a surgeon. The anatomy knowledge I gained helped me in my final years of medical school and when writing research papers.”

Eduardo Muscogliati, Year 5

INTERCALATION

Intercalation is an opportunity for you to take time out from your Medicine degree, and study for an additional degree. This may be a specially designed intercalated Bachelors (BSc), Masters (MSc) or PhD programme, depending on your interests.

[Visit our website to find out more about intercalation](#) 



ELECTIVE

You will carry out a six-week elective at the beginning of your final year when you'll have the chance to travel abroad or work in a specialist service in the UK.

[Visit our website to find out more about elective](#) 



“During my medical elective in Vietnam and Cambodia, I gained profound insights into global healthcare practices, and how traditional medicine is integrated with evidence-based treatments to provide comprehensive and culturally sensitive care.”

Komalpreet Kaur, Year 5

“Having the opportunity to get involved in some of the exciting research conducted at Hull York Medical School, specifically within the field of palliative medicine, has been a personal highlight throughout my time as a Medicine student. It has allowed me to explore my passion for whole person medicine, and encouraged me to pursue an academic career.”

Megan Coverdale, Year 5



RESEARCH AND MEDICAL EDUCATION OPPORTUNITIES

As a student with us, you will have the opportunity to interact with and be taught by leaders in research and medical education as part of the curriculum.

[Visit our website to find out more about research opportunities](#) 

THE LONGITUDINAL INTEGRATED CLERKSHIP (LIC)

The LIC is an innovative, year-long clinical placement opportunity, replacing one of the standard Phase II years, that allows some students to be immersed in the whole patient journey, following the same patients over time in varied clinical settings.

[Visit our website to find out more about the LIC](#) 



“The LIC allowed me to build stronger professional relationships, have a more independent learning experience, and to expand my clinical knowledge.”

Thomas Panter, Year 5

YOUR HOME FROM HOME

WHICH CAMPUS WILL YOU BE BASED AT?

If you are a student on the five-year Medicine programme, you will be allocated to Hull or York as your home campus when you receive your offer to study with us. Your home campus will be allocated at random, unless you meet certain limited criteria, and you will be based there for your first two years of study.

If you are a student on the six-year Medicine with a Gateway Year programme, you will spend the initial gateway year based at the University of Hull campus, after which you can choose whether to remain at Hull or transfer to the University of York for Phase I of the Medicine programme.

Regardless of your location, you will follow exactly the same curriculum, have access to the same facilities, and obtain the same level of outstanding teaching as your peers at the other campus.

From the third year of the Medicine programme, you will be on clinical placement. Each year you will be allocated a clinical base site at either Hull or York where you will be expected to maintain independent accommodation.

LEARN MORE ABOUT STUDENT LIFE



CLICK HERE

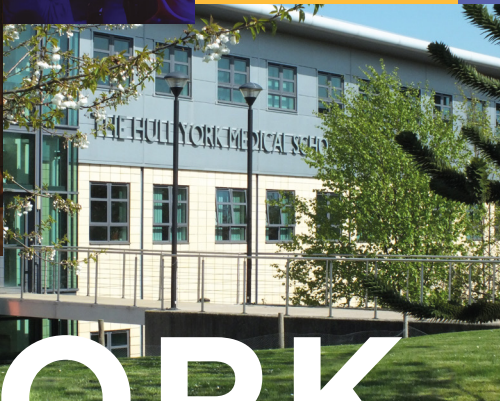
You will also have placements away from your base site. Support is available when additional accommodation is required to ensure you are not expected to bear the cost of maintaining two sets of accommodation (support can include both reimbursement and some costs covered at source).

CAMPUS LIFE

Whichever home university you are allocated, you will become part of a welcoming and diverse student community, with both institutions offering a unique and memorable learning environment – from the beautiful landscaping and red-brick buildings at Hull to the lakeside setting and vibrant college system at York.

Both campuses offer an abundance of cafés, restaurants, outdoor spaces and sports facilities, and plenty of opportunities to meet people, have fun, dust off old skills and develop new ones. Hull and York MedSoc are the two leading societies for Medicine students (though there are literally hundreds more you can join!); whether it's a charity fundraiser, barbecue, formal ball or quiz night, they will ensure there's lots for you to get involved in.

HULL



YORK

CITY EXPERIENCE

York is a city of contrasts. Hull is like nowhere else. Together, we've got some of the biggest attractions in the North of England. But it's the quirks, the culture, the hidden gems waiting around every corner - they're the reason students fall in love with us.

Free museums, eclectic galleries, trendy bars, friendly pubs, famous nightclubs, heart-racing sport, hair-raising shows, foodie haunts, bohemian cafés. There's always something to do and somewhere

to go in Hull and York. Both cities are well-connected, with convenient rail links to London, Edinburgh and Manchester, and easy access to the natural beauty of the Yorkshire countryside and coast.

**MEET OUR
CURRENT MEDSOC
PRESIDENTS**



[CLICK HERE](#)

ENTRY REQUIREMENTS

MEDICINE WITH A GATEWAY YEAR (6 YEARS)

A LEVELS: BBC, including Biology, Chemistry and any third subject (excluding General Studies, Critical Thinking, Citizenship and Applied Science), with a minimum grade of B in Biology and Chemistry. **Predicted or achieved grades should be no lower than BBC and no higher than ABB.**

GCSEs: 5 GCSEs at 9/A* - 4/C by the time of application, including grade 4/C or better in GCSE English Language (as a first language) and Maths (or equivalent).

UCAT: Situational Judgement Test band of 1, 2 or 3. The UCAT must be taken in the calendar year of application.

ELIGIBILITY CRITERIA

- No more than 5 academic years between completing compulsory pre-16 education and the start of the programme
- Applications for this programme from outside the UK are not accepted

All applicants must meet two or more of the following criteria:

- You are in receipt of the UCAT Bursary
- You are resident in POLAR 4 Young Participation Area Quintile 1 or Quintile 2
- You are the first in your family to attend University
- You attended a school with a Progress 8 score below the national average for GCSE (or equivalent) study. Please see our website for equivalent measures used for applicants from the devolved nations.

Applicants may also be eligible if they do not meet the above criteria, but have successfully completed a recognised Widening Participation programme, OR are Care experienced, have Refugee

status, or are from a Military or Gypsy/Roma/Traveller background.

All applicants must apply by the UCAT early application deadline in October, in the calendar year prior to entry, and must be aged 18 or over on 1 October in the year they enrol.

Additional eligibility criteria may apply. Further points may be awarded to local applicants, or those who meet further contextual criteria. Please visit our website for full details.

This is a general overview of entry requirements for the Medicine with a Gateway Year programme; please visit our website for full details.

KEY FACTS

INTAKE: 35 PLACES

UCAS INSTITUTION CODE: H75

UCAS COURSE CODE: A108

AWARD: MB BS (Bachelor of Medicine and Bachelor of Surgery) degree, awarded jointly by the Universities of Hull and York.

**DISCOVER
OUR COMPLETE
GATEWAY ENTRY
REQUIREMENTS**



MEDICINE (5 YEARS)

A LEVELS: AAA, including Biology and Chemistry and any third subject (excluding General Studies, Critical Thinking, Citizenship and Applied Science). Predicted grades should be no lower than AAB.

GCSEs: 6 GCSEs at grade 9/A* - 4/C by the time of application, including grade

6/B in GCSE English Language (as a first language) and Maths (or equivalent). Applicants can be resitting in order to achieve the required level in English Language and/or Maths.

UCAT: Situational Judgement Test band of 1, 2 or 3. The UCAT must be taken in the calendar year of application.

APPLICANT REQUIREMENTS

All applicants must apply by the UCAS early application deadline in October, in the calendar year prior to entry, and must be aged 18 or over on 1 October in the year they enrol. We will accept deferred applications from home and overseas applicants, to meet this minimum age requirement in the year they enrol.

ENGLISH LANGUAGE REQUIREMENTS

IELTS score of 7.5 with a minimum of 7.0 in every component, obtained within the last two years. Other English Language qualifications are accepted – please see our website for details.

GRADUATES

Our standard Graduate offer is 2.1 or equivalent, if your undergraduate degree meets our eligibility requirements.

INTERNATIONAL APPLICANTS

We welcome applications for our five-year Medicine programme from international students of excellent academic standing.

ACCESS COURSE ENTRY

If you are applying to Medicine via an approved Access Course, you must have GCSE English Language and Maths at Grade B/6 or better.

Applicants must have completed one of our approved Access to HE Diploma (Medicine) courses (visit our website for the complete list).

We do not accept applications from applicants who have previously studied medicine elsewhere.

This is a general overview of entry requirements for the Medicine programme; please visit our website for full details.

KEY FACTS

INTAKE: 228 UK/EU and 11 international places

UCAS INSTITUTION CODE: H75

UCAS COURSE CODE: A100

AWARD: MB BS (Bachelor of Medicine and Bachelor of Surgery) degree, awarded jointly by the Universities of Hull and York.

**DISCOVER
OUR COMPLETE
MEDICINE ENTRY
REQUIREMENTS**



CLICK HERE

OUR SELECTION PROCEDURE

Applicants meeting our minimum academic requirements are ranked for interview based on the following factors:

- Top 6 GCSE results (five-year Medicine programme) or Top 5 GCSE results (six-year Medicine with a Gateway Year programme) (up to 35 points)
- UCAT decile (up to 35 points)
- UCAT Situational Judgement Test, band 1-3 (up to 15 points)
- Contextual data (up to 15 points).
Click below for more information about contextual data and how we use it
- An additional 2 Regional Prioritisation points will be allocated in the selection for interview process to local applicants to our six-year Medicine with a Gateway Year programme.

We do not score your personal statement; however, it is an important part of your application to Hull York Medical School as it allows you to talk about your interests, achievements and aspirations.

INTERVIEWS

We run Multiple Mini Interviews (MMIs), where applicants rotate around a series of short interview stations. In the MMIs, we want to find out more about you, your personal characteristics and values, and your ability to think critically and work as a team. You won't be tested on your medical knowledge. We understand that you may feel nervous about interviews, but we do encourage you to relax, be yourself and enjoy your day with us. The interviews help us to find out more about you. They also provide you with the opportunity to meet current students and find out more about what it's like to study with us. Candidates are ranked following interview, and offers are issued soon after.

[Visit our website to find out more about how we interview](#) 

**LEARN
MORE ABOUT
CONTEXTUAL DATA**



CLICK HERE

LEARN
MORE ABOUT
SELECTION



CLICK HERE

All applications are checked to ensure they meet our academic requirements

1

ENTRY REQUIREMENTS

UCAT SCORE
35 POINTS

TOP GCSE
RESULTS
35 POINTS

UCAT
SJT BAND
15 POINTS

CONTEXTUAL
DATA
UP TO 15 POINTS

2

INTERVIEW SELECTION

Applicants are scored and ranked on these areas:

CONTEXTUAL
DATA

4

OFFERS

Offers are made based on a combination of these areas:

OVERALL
INTERVIEW SCORE

3

INTERVIEW

GROUP
EXERCISE

STUDENT
STATION

SCENARIO
STATION

MINI
INTERVIEW
1 & 2

OUR



OFFERS

We combine your overall interview score with additional points allocated based on your contextual data (visit hyms.ac.uk/contextual for details).

We then rank applicants and make offers once all interviews are completed. Based on your application, circumstances and interview performance, we could issue one of the following types of offers (visit our website for details of our non-A Level offers):

MEDICINE

STANDARD OFFER: AAA

at A Level including Biology and Chemistry. The third A level can be any subject (excluding General Studies, Applied Science, Citizenship and Critical Thinking). All three A levels should be taken in one sitting.

EPQ OFFER: AAB

at A level, to include AA in Biology and Chemistry, plus A in the EPQ. This offer is only available to applicants who firmly accept their offer.

REDUCED OFFER: AAB

at A level, to include Biology and Chemistry and specified contextual markers. There is no subject restriction for which A Level the B is achieved in. This offer is only available to applicants who firmly accept their offer.

ALTERNATIVE OFFER: ABB

at A Level, to include Biology and Chemistry, plus successful completion of one of our recognised widening participation programmes. This offer is only available to applicants who firmly accept their offer.

MEDICINE WITH A GATEWAY YEAR

STANDARD OFFER: BBC

at A level, with B in Biology and Chemistry. 30 in the International Baccalaureate, with 5 in both Biology and Chemistry at Higher Level.

Distinction, Distinction, Distinction (DDD) in the BTEC Level 3 National Extended Diploma in Applied Science (Biomedical Science) pathway.

**LEARN MORE
ABOUT OUR
OFFERS**



CLICK HERE

APPLYING TO




MEDICAL SCHOOL

At Hull York Medical School, we believe that the medical profession should better represent the diversity of our population and the society we live in, including underrepresented groups.

We therefore place as much importance on your personal attributes and values as we do on your academic accomplishments. If you've always dreamed of becoming a doctor but worry that Medicine is out of your reach, think again - you may be just who we are looking for!


DIVERSITY AND WIDENING PARTICIPATION

We are committed to raising aspirations and widening access to Medicine for those from underrepresented backgrounds, and selecting the best applicants based on their potential. One way in which we achieve this is by using contextual information alongside your UCAS application to better inform our decision-making.

More information about how we use contextual data. 

MEDICINE WITH A GATEWAY YEAR

The Medicine with a Gateway Year programme is a widening participation initiative which aims to support students from underrepresented backgrounds who have a passion for making a difference and are keen to pursue a career in medicine. You must meet a number of essential criteria to be eligible to apply.

More information about our Medicine with a Gateway Year programme. 

HEALTH AND DISABILITY

We welcome an application from you if you have a disability or long-term health condition. We believe that you can make an invaluable contribution to the medical profession and patient care, and we're committed to supporting and advising you in the application process. We follow advisory guidance published by the General Medical Council (Welcomed and Valued) and the Medical Schools Council (Supporting and encouraging applicants with a disability). We will support students with disabilities and health conditions with reasonable adjustments through our selection, recruitment and admission processes, and during their medical studies.

Visit our website for more detailed information 

Learn more about applying to medical school over the page.

DBS CHECKS

Applicants are responsible for disclosing any non 'protected' prior convictions, cautions, reprimands, final warnings, police and fixed penalty notices, pending matters and charges including proceedings before a Criminal Court or Tribunal or matters subject to bail by either the police or a court.

These disclosures should be made by writing directly to the Director of Admissions when you apply.


Applicants are also responsible for disclosing any non 'protected' prior convictions, cautions, reprimands, or final warnings in their UCAS application.

More information about DBS checks 

In accordance with General Medical Council guidelines, we also require an enhanced DBS check on entry to our Medicine programmes course for any Home (UK) student, or any student who has lived in the UK. International students are required to submit an equivalent police check from the relevant authorities in their home country as part of the admissions process.

OCCUPATIONAL HEALTH ASSESSMENT

All candidates who firmly accept an offer from us will be sent an occupational health assessment form which includes health screening and immunisation history, in June of the year they are due to start studying with us. This must be completed and returned before taking up your place with us.

More information about occupational health 

WE ARE HERE TO HELP

We know that applying to medical school can appear complicated and daunting, which is why our friendly and knowledgeable admissions team is on hand to answer your questions, and offer timely, jargon-free guidance and support where possible. If you would like to contact us in confidence about your circumstances, please email **further.enquiries@hyms.ac.uk**

LEARN MORE
ABOUT HOW
TO APPLY



CLICK HERE



BEING A HULL-BASED STUDENT AT HULL YORK MEANT THAT I COULD STUDY MEDICINE AT A GREAT CAMPUS, WITHIN A CITY THAT WAS REALLY CHEAP TO LIVE IN, PARTICULARLY THE ACCOMMODATION! THE MANY PUBS, CLUBS AND RESTAURANTS IN HULL, GAVE MY FRIENDS AND I, LOADS OF PLACES TO EXPLORE AND ENJOY.

Dominic Treloar, Class of 2024

NOT ONLY IS YORK A BEAUTIFUL CITY WITH A RICH HISTORY, BUT COMBINE THAT WITH A LARGE AND DIVERSE STUDENT POPULATION, AND INCREDIBLY FRIENDLY LOCALS, AND IT BECOMES THE PERFECT PLACE TO SPEND YOUR FIRST TWO YEARS IN MEDICAL SCHOOL. THE CITY WILL ALWAYS HOLD A SPECIAL PLACE IN MY HEART AS I MADE SOME INCREDIBLE MEMORIES AND LIFELONG FRIENDS HERE.

Vigneshwar Veerappan, Class of 2023



FEEES AND



FUNDING

FEES


UK (HOME) STUDENTS

The current tuition fee for 2025/26 entry on both the five-year Medicine and six-year Medicine with a Gateway Year programmes is £9,250/£9,535 (to be confirmed*) per year for UK (home) students. Fees for 2026/27 are subject to increase in line with government policy, and further increases within the government fee cap may apply in subsequent academic years.

[Learn more about fees](#) 

INTERNATIONAL (INCLUDING EU) STUDENTS

Current international fees for the 2025/26 academic year are £47,000 per year. Fees are subject to increase in subsequent years in line with the prevailing Consumer Price Index (CPI) inflation rate (up to a maximum of 10%). The 2026/27 fees are yet to be confirmed, but will be published on our website when available.

[Learn more about fees](#) 

ADDITIONAL COSTS

You will need to buy a stethoscope. Costs typically start at around £90. You do not need a specialist stethoscope, i.e. a paediatric or cardiology stethoscope.


Details of accommodation options and costs for students in Years 1 and 2 are available at **hull.ac.uk/accommodation**  and **york.ac.uk/accommodation**. 

For the remainder of the Medicine programme, you will be on clinical placement.

Each year you will be allocated a clinical base site at either Hull or York where you will be expected to maintain independent accommodation. There will be costs incurred throughout the course whilst on clinical placement which are likely to include travel, parking and/or accommodation. These costs will vary, travel contribution schemes and bursaries are available to support you. Support is available when additional accommodation is required to ensure you are not expected to bear the cost of maintaining two sets of accommodation.

Students are required to complete an elective at the beginning of Year 5. The elective is funded by the medical student and associated costs will vary depending on the elective you choose, and whether this is overseas or in the UK.

[Find out more about living costs at the University of Hull](#) 

[Find out more about living costs at the University of York](#) 

Read about funding support and scholarship opportunities on the next page.

**LEARN MORE
ABOUT FEES**



CLICK HERE

*In November 2024, the UK Government announced that the fee cap for full-time UK (home) students may rise from £9,250 to £9,535, starting from the 2025/6 academic year. We will publish any updates to fees on our website once they have been confirmed.



FINANCIAL SUPPORT

TUITION FEE LOAN

During your first four years of study, students who have not already studied at degree level may be eligible to apply for a Tuition Fee Loan from Student Finance England. If you are from Wales, Northern Ireland, Scotland, Guernsey, Jersey or the Isle of Man you will need to apply to the funding body in your home region/country for your student finance, and their arrangements may differ. The Tuition Fee Loan is paid directly to the University on your behalf. It covers the cost of your tuition fees in full. You start paying this back after you have left university.

NHS FUNDING

If you are from England or Wales, in the fifth year of the Medicine programme, or fifth and sixth years of the Medicine with a Gateway Year programme, you will be eligible to apply for NHS funding providing you were living in the UK, the Channel Islands or the Isle of Man for at least three years before the start of the course. NHS funding does not have to be repaid. Please see the

[NHS Student Bursaries](#)  and [Student Finance NHS bursaries](#)  websites for more information.

MAINTENANCE LOAN

The Maintenance Loan (UK students only) helps towards your living costs. The amount you receive depends on your household income, and may vary over the course of the programme. Like the Tuition Fee Loan, you will start paying this back after you have left university and are earning over £25,000.

[Student Finance England's calculator](#)

helps you determine how much Maintenance Loan you are eligible to receive.

GATEWAY OPPORTUNITY SCHOLARSHIPS

Students joining our Medicine with a Gateway Year programme may be eligible to apply for one of our Gateway Opportunity Scholarships of £6,000 (£1,000 per year). In 2024 there were six scholarships available and these are awarded as an accommodation discount or cash payment in increments over the duration of the programme. Details of the Scholarships for 2026 are yet to be confirmed but will be published on our website when available. Eligible students will be invited to apply for the Scholarship following confirmation of their place and ahead of registration.

INTERNATIONAL EXCELLENCE SCHOLARSHIP

Each year we award up to four International Excellence Scholarships based on academic merit and financial need.

For 2024 entry the Scholarship is 5% of the overseas tuition fee for each year of successful study on the five-year MB BS Medicine Programme, paid as a tuition fee discount. Details for 2026 entry are to be confirmed.

DISABLED STUDENTS

Students with a disability can apply for Disabled Students' Allowances to cover any additional costs incurred because of their disability.



BEING AN INTERNATIONAL STUDENT AT HULL YORK MEDICAL SCHOOL HAS TRANSFORMED THE CONCEPT OF HOME FOR ME. IT'S NOT JUST A PLACE AWAY FROM HOME; IT'S AN EXPANSION OF BOUNDARIES, AND A GLOBAL COMMUNITY PURSUING EXCELLENCE TOGETHER!

Eka Narayan, Year 3

STUDENTS WITH CHILDREN

Students with children may be eligible for the Parents' Learning Allowance and a Childcare Grant.

GRADUATES

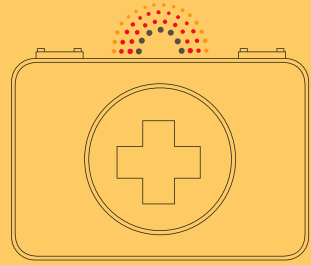
If you have already completed an undergraduate degree, you won't be entitled to a Tuition Fee Loan but may still be eligible for the Maintenance Loan and Hull York Medical School Bursary. Any previous study at degree level will impact the funding you can receive, even if you did not finish your degree. You will still receive NHS funding in your final year if you are eligible.

[Learn more about fees and funding](#) 

HULL YORK MEDICAL SCHOOL BURSARY

UK students starting in 2024 with a residual household income of £25,000 or less may receive the Hull York Medical School Bursary of £2,400 per year of study. This is awarded as an accommodation discount, or a cash sum if you are not in university managed accommodation. Details of the Bursary for 2026 entry are yet to be confirmed but will be published on our website when available. You do not need to apply for the bursary from the Medical School. When you complete your student finance application, you must tick the box giving your permission to share your personal information with the University of Hull or the University of York.

AFTER YOU GRADUATE



At the end of the Medicine or Medicine with a Gateway Year programme, you will graduate with an MB BS (Bachelor of Medicine and Bachelor of Surgery) degree, awarded jointly by the Universities of Hull and York.

Graduation marks the end of one phase of your medical training and the beginning of another - Foundation Year 1 and Foundation Year 2 training.


REGISTRATION

After graduation, you are entitled to provisional registration with the UK General Medical Council, and are given a UK licence to practise medicine.

Your degree is a primary medical qualification (PMQ). Holding a PMQ entitles you to provisional registration with the General Medical Council, subject only to its acceptance that there are no Fitness to Practise concerns that need consideration. Provisional registration is time-limited to a maximum of three years and 30 days (1125 days in total). After this time period your provisional registration will normally expire.

FOUNDATION PROGRAMME

Medical school graduates continue to train for two years while working as junior doctors in the NHS, in Foundation Year 1 and Foundation Year 2 (FY1 and FY2) posts. This two-year foundation period forms a bridge for newly qualified doctors between medical school and specialist training. Trainees gain experience in a variety of healthcare settings, including hospitals and GP surgeries.

To obtain a Foundation post you will need to apply during the final year of your undergraduate course through the UK Foundation Programme Office (UKFPO) selection schemes, which allocate these posts to medical school graduates. The application and selection processes for the different programmes are described on the [UKFPO website](#) 

Successful completion of the Foundation Year 1 programme is normally achieved within 12 months and is marked by the award of a Certificate of Experience. You will then be eligible to apply for full registration with the General Medical Council. You need full registration with a UK licence to practise for unsupervised medical practice in the NHS or private practice in the UK.

THE LEARNING CURVE AS A FOUNDATION YEAR 1 JUNIOR DOCTOR IS STEEP - BUT THE COMMUNICATION AND TEAMWORK SKILLS I GAINED AT HULL YORK MEDICAL SCHOOL HAVE HELPED ME IN MY ROLE.

Dr Jannah Holmes, Class of 2022

Lincolnshire, Foundation training is coordinated by the East Yorkshire Locality Scheme, one of three Foundation Programmes within the broader Yorkshire and the Humber Foundation School.

We have close links with the Foundation School, as the majority of our graduating students choose to stay in the Yorkshire and Humber region to continue their training.

MEDICAL LICENSING ASSESSMENT

Find out more about the MLA on the [General Medical Council's website](#) 



DISCOVER MORE AT ONE OF OUR UPCOMING OPEN DAYS

Visit [OUR WEBSITE](#)  for the latest information, and to book your place.

BOOK ON
AN OPEN DAY



CLICK HERE

ADMISSIONS ENQUIRIES

E: further.enquiries@hyms.ac.uk

UNIVERSITY OF HULL

Cottingham Road, Hull HU6 7RX

UNIVERSITY OF YORK

Heslington, York YO10 5DD



Hull York Medical School



@hyms.ac.uk



@HullYorkMed



Please recycle this prospectus, or pass it on to a friend.

This prospectus is intended for students applying to join Hull York Medical School in 2026. All details were correct at time of going to print (January 2025). We regularly review our placement offering to ensure you get the very best clinical experience across our region, and so it is possible that changes to the way we deliver placements may become necessary in future years. For the most up-to-date information please visit [our website](#).